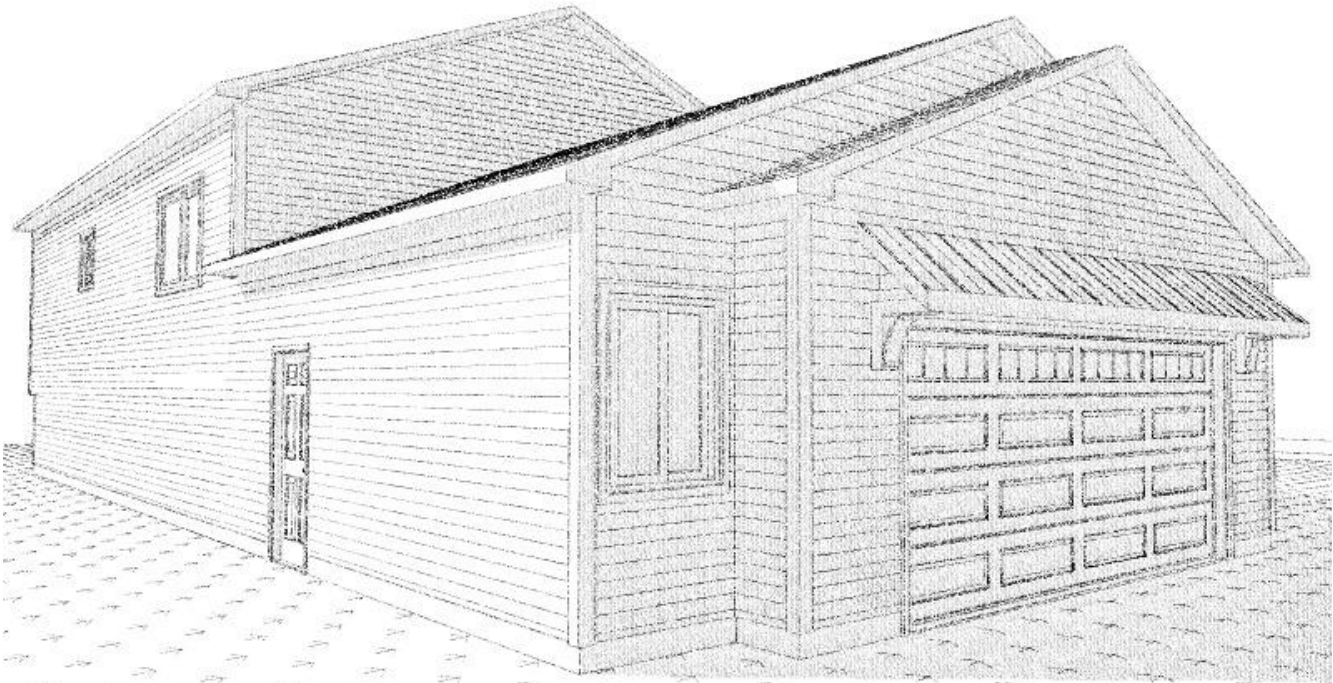
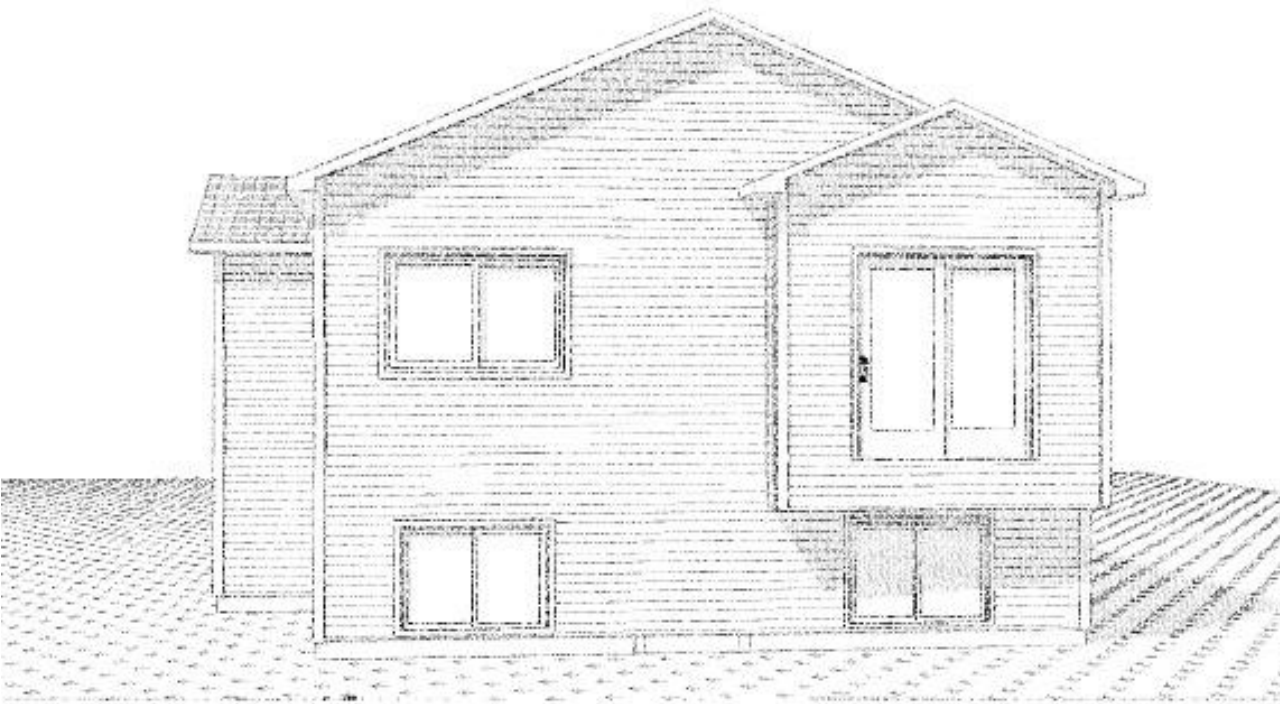


FRONT VIEW



LEFT FRONT VIEW



REAR VIEW

Issac 28' 2GL (Shed wndw)  
(RH Entry)

Project Description: Fargo , North Dakota	Drawn by: AS	Checked by: JCH II	M1
	Date Issued: 10-25-2022		Revised Date: -
	Scale: REFER TO PLANS		

**Disclaimer of Warranties**  
Plans furnished by Simonson Lbr. & Hdware, Inc. are prepared by Professional Engineers and who have had no training in Architectural or Professional Engineering. Simonson Lbr. & Hdware, Inc. expressly disclaims any liability whatsoever for errors of any kind which may be found on the plans. Use of such plans is at the owner's risk. Simonson Lbr. & Hdware, Inc. and its employees and Lumber Company that they are suitable for any general or particular purpose. Release by any User of these plans and All Responsibilities for bearing points or application of the art or science of construction based on the principles of mathematics, aesthetics or the physical sciences must be the Responsibility of the Builder, the Owner, or the User of the plans.

**Copyright**  
Any use, reproduction, copying, modification, or derivative work of the plan(s) furnished by Simonson Lumber & Hardware, Inc. & J&L Construction is a violation of the United States Federal Copyright Act.

THIS PLAN IS THE MOST  
CURRENT PLAN AS OF THIS DATE

10/25/2022

IF THIS DATE IS MORE THAN 1 WEEK OLD  
PLEASE VERIFY WITH THE DRAFTER AT  
SIMONSON'S THAT YOU HAVE THE MOST  
RECENT COPY

CONTRACTOR

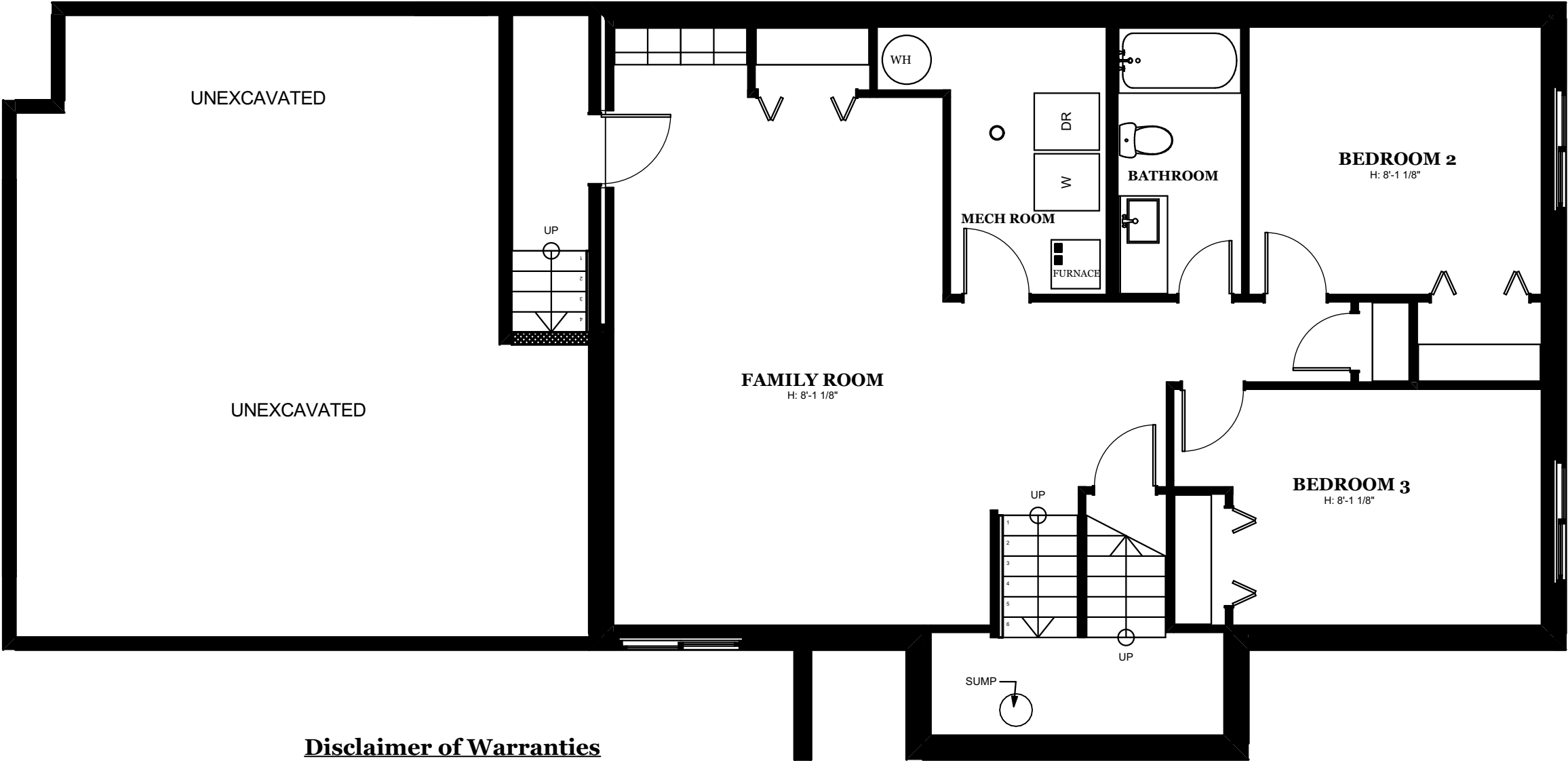


J & L Construction



Simonson Lumber &  
Hardware, Inc.  
Fargo, ND. Ph: (701) 232-3281

LOWER FLOOR



Disclaimer of Warranties

Plans furnished by **Simonson Lbr. & Hdwe, Inc.** are prepared by Draftsmen who are not Qualified as professional Architects or professional Engineers and who have had no training in Architectural or Professional Engineering. **Simonson Lbr. & Hdwe, Inc.** expressly disclaims any liability whatsoever for errors of any kind which may be found on the plans. Use of such plans shall be at the **Sole risk of the User.** **Any plans** furnished by **Simonson Lbr. & Hdwe, Inc.** are furnished without any warranty by said **Lumber Company** that they are suitable for any general or particular purpose. Reliance by any **User** of these plans and **All Responsibilities** for the usage and/or calculation of correct structural materials, spans, loads, & bearing points or application of the art or science of construction based on the principles of mathematics, aesthetics or the physical sciences must be the **Responsibility of the Builder**, the **Owner**, or the **User** of the plans.

Copyright

Any use, reproduction, copying, modification, or derivative work of the plan(s) furnished by **Simonson Lumber & Hardware, Inc. & J&L Construction** is a violation of the United States Federal Copyright Act.

PROJECT SQUARE FOOTAGE -ANSI Z765-2003 GUIDELINES

LOWER FLOOR-FOUNDATION LEVEL	946.50
STAIRS & FOYER	104.59
UPPER FLOOR	1,046.24
2,097.33 sq ft	

CONTRACTOR



**Simonson Lumber & Hardware, Inc.**  
Fargo, ND. Ph: (701) 232-3281

Disclaimer of Warranties

Plans furnished by **Simonson Lbr. & Hdwe, Inc.** are prepared by Draftsmen who are not Qualified as professional Architects or professional Engineers and who have had no training in Architectural or Professional Engineering. **Simonson Lbr. & Hdwe, Inc.** expressly disclaims any liability whatsoever for errors of any kind which may be found on the plans. Use of such plans shall be at the **Sole risk of the User.** **Any plans** furnished by **Simonson Lbr. & Hdwe, Inc.** are furnished without any warranty by said **Lumber Company** that they are suitable for any general or particular purpose. Reliance by any **User** of these plans and **All Responsibilities** for the usage and/or calculation of correct structural materials, spans, loads, & bearing points or application of the art or science of construction based on the principles of mathematics, aesthetics or the physical sciences must be the **Responsibility of the Builder**, the **Owner**, or the **User** of the plans.

Copyright

Any use, reproduction, copying, modification, or derivative work of the plan(s) furnished by **Simonson Lumber & Hardware, Inc. & J&L Construction** is a violation of the United States Federal Copyright Act.

THIS PLAN IS THE MOST  
CURRENT PLAN AS OF THIS DATE

10/25/2022

IF THIS DATE IS MORE THAN 1 WEEK OLD  
PLEASE VERIFY WITH THE DRAFTER AT  
SIMONSON'S THAT YOU HAVE THE MOST  
RECENT COPY

Issac 28' 2GL (Shed wndw)  
(RH Entry)

Project Description:

Fargo , North Dakota.

Drawn by: AS

Checked by: JCH II

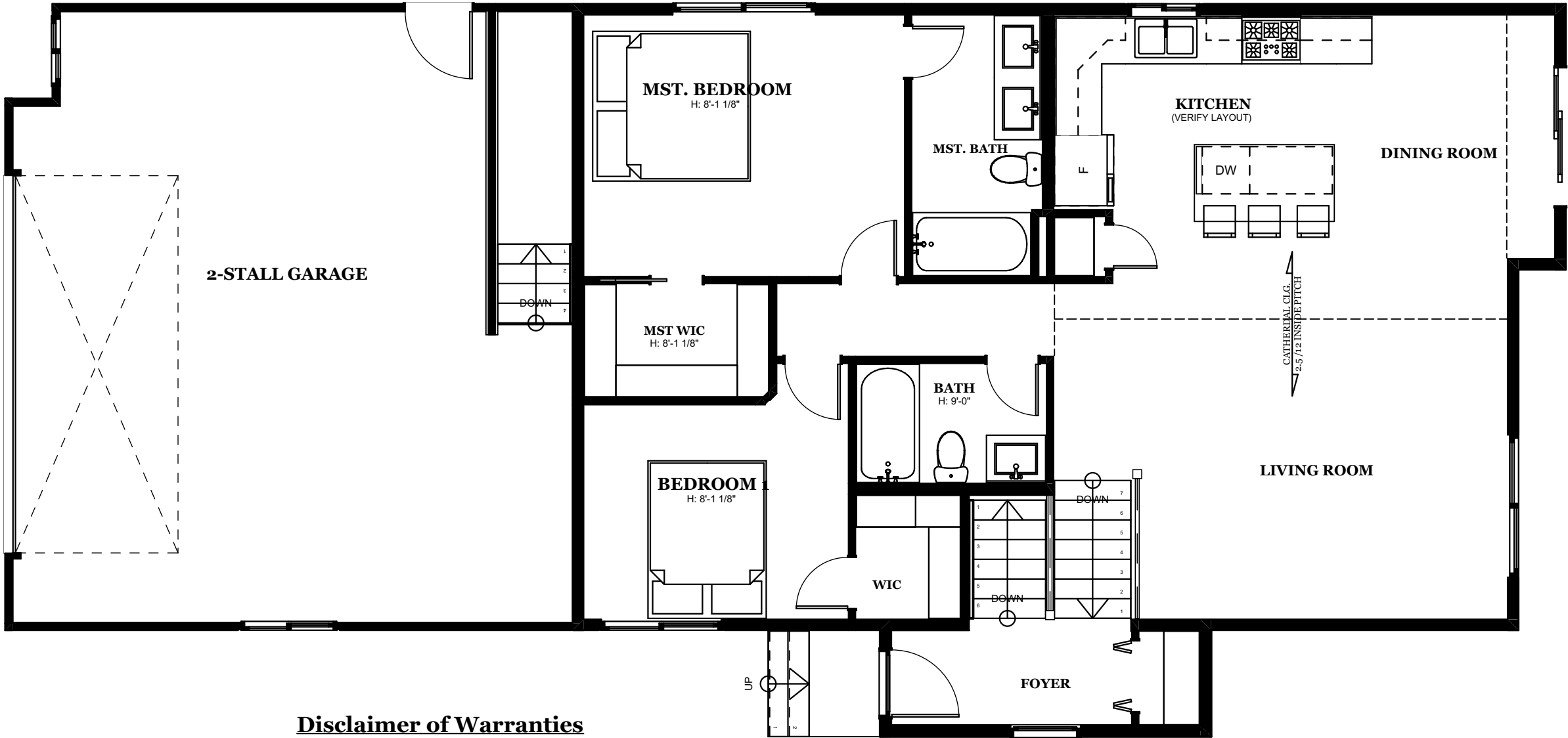
M1

Date Issued: 10-25-2022

Revised Date: -

Simonson Lumber & Hardware, Inc. is not responsible for any changes after the date above.

UPPER FLOOR PLAN



Disclaimer of Warranties

Plans furnished by **Simonson Lbr. & Hdwe, Inc.** are prepared by Draftsmen who are not Qualified as professional Architects or professional Engineers and who have had no training in Architectural or Professional Engineering. **Simonson Lbr. & Hdwe, Inc.** expressly disclaims any liability whatsoever for errors of any kind which may be found on the plans. Use of such plans shall be at the **Sole risk of the User.** Any plans furnished by **Simonson Lbr. & Hdwe, Inc.** are furnished without any warranty by said **Lumber Company** that they are suitable for any general or particular purpose. Reliance by any **User** of these plans and **All Responsibilities** for the usage and/or calculation of correct structural materials, spans, loads, & bearing points or application of the art or science of construction based on the principles of mathematics, aesthetics or the physical sciences must be the **Responsibility of the Builder**, the **Owner**, or the **User** of the plans.

Copyright

Any use, reproduction, copying, modification, or derivative work of the plan(s) furnished by **Simonson Lumber & Hardware, Inc. & J&L Construction** is a violation of the United States Federal Copyright Act.

PROJECT SQUARE FOOTAGE -ANSI Z765-2003 GUIDELINES

LOWER FLOOR-FOUNDATION LEVEL	946.50
STAIRS & FOYER	104.59
UPPER FLOOR	1,046.24
	2,097.33 sq ft

Issac 28' 2GL (Shed wndw)  
(RH Entry)

Project Description:	Drawn by: AS	Checked by: JCH II	M2
	Date Issued: 10-25-2022	Revised Date: -	
	Scale: REFER TO PLANS		Simonson Lumber & Hardware, Inc. is not responsible for any changes after the date above.

**Disclaimer of Warranties**

Plans furnished by **Simonson Lbr. & Hdwe, Inc.** are prepared by Draftsmen who are not Qualified as professional Architects or professional Engineers and who have had no training in Architectural or Professional Engineering. **Simonson Lbr. & Hdwe, Inc.** expressly disclaims any liability whatsoever for errors of any kind which may be found on the plans. Use of such plans shall be at the **Sole risk of the User.** Any plans furnished by **Simonson Lbr. & Hdwe, Inc.** are furnished without any warranty by said **Lumber Company** that they are suitable for any general or particular purpose. Reliance by any **User** of these plans and **All Responsibilities** for the usage and/or calculation of correct structural materials, spans, loads, & bearing points or application of the art or science of construction based on the principles of mathematics, aesthetics or the physical sciences must be the **Responsibility of the Builder**, the **Owner**, or the **User** of the plans.

**Copyright**

Any use, reproduction, copying, modification, or derivative work of the plan(s) furnished by **Simonson Lumber & Hardware, Inc. & J&L Construction** is a violation of the United States Federal Copyright Act.

THIS PLAN IS THE MOST  
CURRENT PLAN AS OF THIS DATE

10/25/2022

IF THIS DATE IS MORE THAN 1 WEEK OLD  
PLEASE VERIFY WITH THE DRAFTER AT  
SIMONSON'S THAT YOU HAVE THE MOST  
RECENT COPY

CONTRACTOR

**J & L Construction**

**Simonson Lumber & Hardware, Inc.**  
Fargo, ND. Ph: (701) 232-3281